

# BUDADEE



## This issue:

Continuation of the  
Bilby Program  
PAGE 02

2026 Annual General  
Meeting  
PAGE 03-05

Calitropis Update  
PAGE 06-07

Fire Burn Plan  
PAGE 8

NEXT MEETING

19<sup>TH</sup> MAY 2026

# BILBY'S!!

The bilby program has been successfully running for over 2 years now, thanks to the amazing work of the rangers and elders. We have now obviously seen an increase in their population through our trail cams. Even seeing baby Bilby's which means they must be having fun out there.

Very positive result.

Especially since we have started doing the fire burning-the first one being last year- to rejuvenate the country and bring more food for the wildlife.

The rangers attended the fire burning forum which was held on the 23rd-26<sup>th</sup> of February this year, in Darwin, N.T.

There may be another one from the 11<sup>th</sup> - 15<sup>th</sup> May 2026, which all information will be included in the next newsletter. Our rangers will be contacted closer to the date!

Done correctly, cultural burning acts to protect nature and culture, and foster connections to Country (spirit). To our Palyku people these elements are interconnected and inseparable. From an ecological perspective, Palyku burning practices promote the establishment of smaller, herbaceous seeding plants that thrive post fire, and promotes new growth from obligate colonisers (fire-tolerant species). This new growth is typically a richer source of food for native fauna than the baru (spinifex)



# AGM Meeting

19<sup>th</sup> February 2026

South Hedland

On the 19<sup>th</sup> of February we had our first annual general meeting for 2026 at the Youth Involvement Council in South Hedland, Karriyara country.

Key highlights included the direction of the newly appointed Director, Stanley Ball Snr, and discussions regarding the design and development of the proposed Native Seed Facility. Members also discussed the nomination and confirmation of Jacqueline Hall as Seed Facility Manager, recognising the importance of this role in supporting seed collection, processing, storage and future enterprise opportunities.

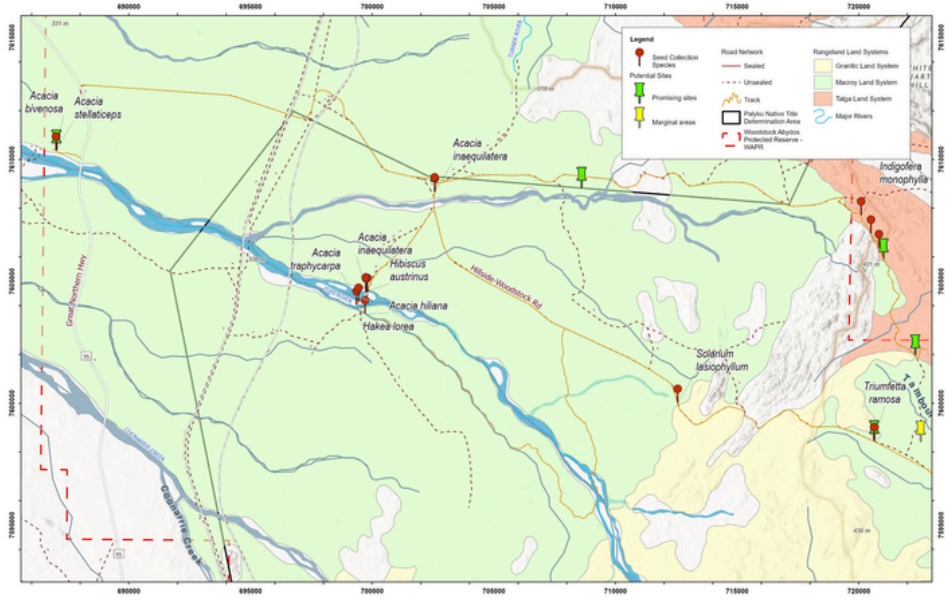
Linda Stream reflected on the PJAC Connection to Country trip assistance. She highlighted the excellent work carried out by the women who attended, noting that they represented Budadee very well. It was also emphasised how much the children enjoyed being on Country, learning and playing. Enjoy some pictures on the next pages regarding the seed collection!



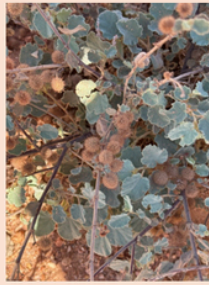
# Native Seed Harvesting – Collection Sites

## Trip 18 - Seed Collection Map

Job No: BUD2406 Map No: 1 Coordinate System: GDA94 MGA Zone 50  
 Date: 30/10/2025 Author: Ana Graklo



*Triumfetta ramosa*



*Acacia inaequilatera*



## WHAT'S NEXT?

- Building on plant identification skills in the field.
- Getting the GPS skills up to pin areas for seed collection.
- Mapping out areas that would benefit from assisted regeneration.
- Using the GPS to scope out areas that could be used as plantations for seed.

# CALOTROPIS PROCERA

THE LATEST UPDATE

As we all know, the Calotropis weed has been an absolute nuisance on country. Thanks to our rangers, and Terra Rosa, we have been declining its existence steadily, and hope to continue.

Across four years of active monitoring (2021, 2022, 2023 and 2025), the total number of *C. procera* plants controlled within the Reserve decreased from approximately 2,711 in 2021, to 1,424 in 2022, to 1,137 in 2023 to 459 in 2025. This represents an 83% reduction in overall plant count from first recording in 2021



## Calotropis Age and Density Statistics

Watercourse	Number of <i>Calotropis procera</i>			Average Density (plants/km)	Average Age Score
	Juvenile	Mature	Total		
Yule River System	81	40	121	10.79	0.33
Yule River	72	25	97	12.67	0.26
Tributaries	1	0	1	2.64	0.00
Coorong Creek	9	15	24	7.36	0.63
Shaw River System	55	26	81	31.97	0.32
Tambourah Creek	55	26	81	31.97	0.32
Turner River System (lower reach)	64	193	257	709.36	0.75

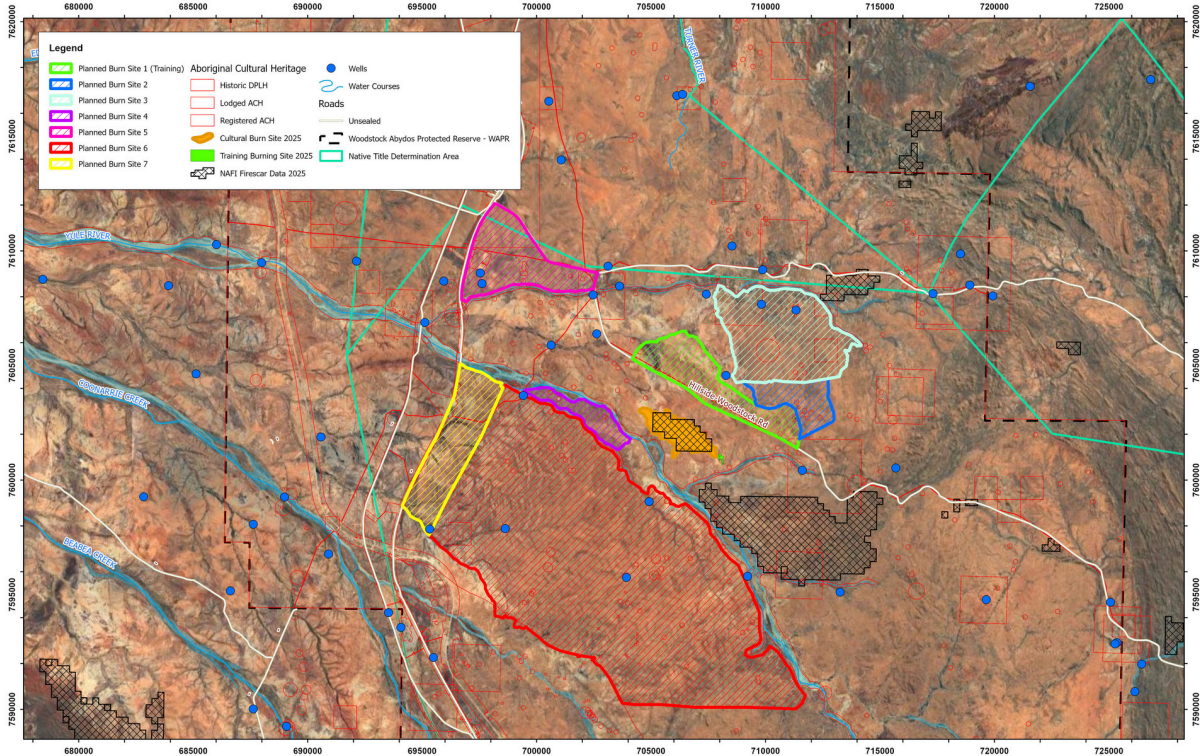
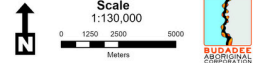
## Calotropis Survey Efforts

Year	Number of <i>C. procera</i> plants	Targeted survey effort (km)	Number of discrete occurrence locations
2021	~ 2,711	Not estimated	26
2022	1,424	106.2	18
2023	1,137	145.4	17
2024	Not surveyed	Not surveyed	Not surveyed
2025	<b>459</b>	<b>82.21</b>	<b>18</b>

# Proposed Fire Burns

## Proposed Burn Sites

Job No: BUD2502 Map No: 1 Coordinate System: GDA94 MGA Zone 50  
Date: 4/03/2026 Author: Ana Giraldo



YOUR "BURN IN BITS AND PIECES, WHILE YOU STAY CLOSE. EVERY YEAR, BURN OFF EVERY YEAR BETTER FOR THE COUNTRY."

"[WHEN THE] GOVERNMENT CAME, NO MORE BURNING. BAD [FOR] COUNTRY. PLANTS COME UP AFTER BURN. RIGHT TIME FOR EATING. BETTER FOR ANIMALS, THEY EAT THE YOUNG SHOOTS. ANIMALS COME BACK TO COUNTRY. LOTS OF FLOWERS TOO, PEAS [STURTS DESERT PEA], BUSH TUCKER FOR PEOPLE. YOU NEVER SEE THEM NOW. HAVEN'T SEEN STURT FLOWERS, ANYTHING LIKE THAT.

WHEN YOU BURN, BURN OFF SMALL AREAS. CHECK FOR ANIMALS. BURN ANOTHER. NOT TOO HOT [OR YOU WILL] CRACK THE ROCK." – FRED STREAM,

PALYKU ELDER

ADDITIONAL OUTCOMES OF THIS PROJECT INCLUDE THE PROTECTION OF THE MYRIAD OF ABORIGINAL CULTURAL HERITAGE SITES (ACH) FOUND IN THARRA. THE IMPACTS OF OUT-OF-CONTROL WILDFIRE ON ACH SITES HAS BEEN OF PARTICULAR CONCERN TO THE PALYKU COMMUNITY. THESE UNMANAGED FIRES BURN AT A HIGH INTENSITY AND CAN CAUSE NEARBY ROCK FACES TO SHEAR OFF DUE TO THERMAL STRESS.